


MAKING AN EFFORT



Annual Report 2019-20





Compiled by
Dr. Khadeeja Azhar, Zia Ur Rahman, Shafiq- Uz- Zaman, Kaleem ur Rahman,
Tahira Rafiq, Tariq Khan, Adil Rauf, Moinuddin Khan, Tania Noreen,
Kashif Niaz and Muhammad Said Shah

Photography by:
© Healthy Media - Shifa Foundation

Designed by:
Sohail Aarbi

Content of this report can not be reproduced without due acknowledgment of
Shifa Foundation.

Get in Touch
Plot 210, Street 07, I-9/2, Islamabad - Pakistan.

Contact
+92 51 846 4171
info@shifafoundation.org
www.shifafoundation.org
www.facebook.com/Shifafoundation
www.twitter.com/Shifafoundation
<http://www.youtube.com/c/Shifafoundationpakistan>

MAKING AN EFFORT



Annual
Report 2019-20



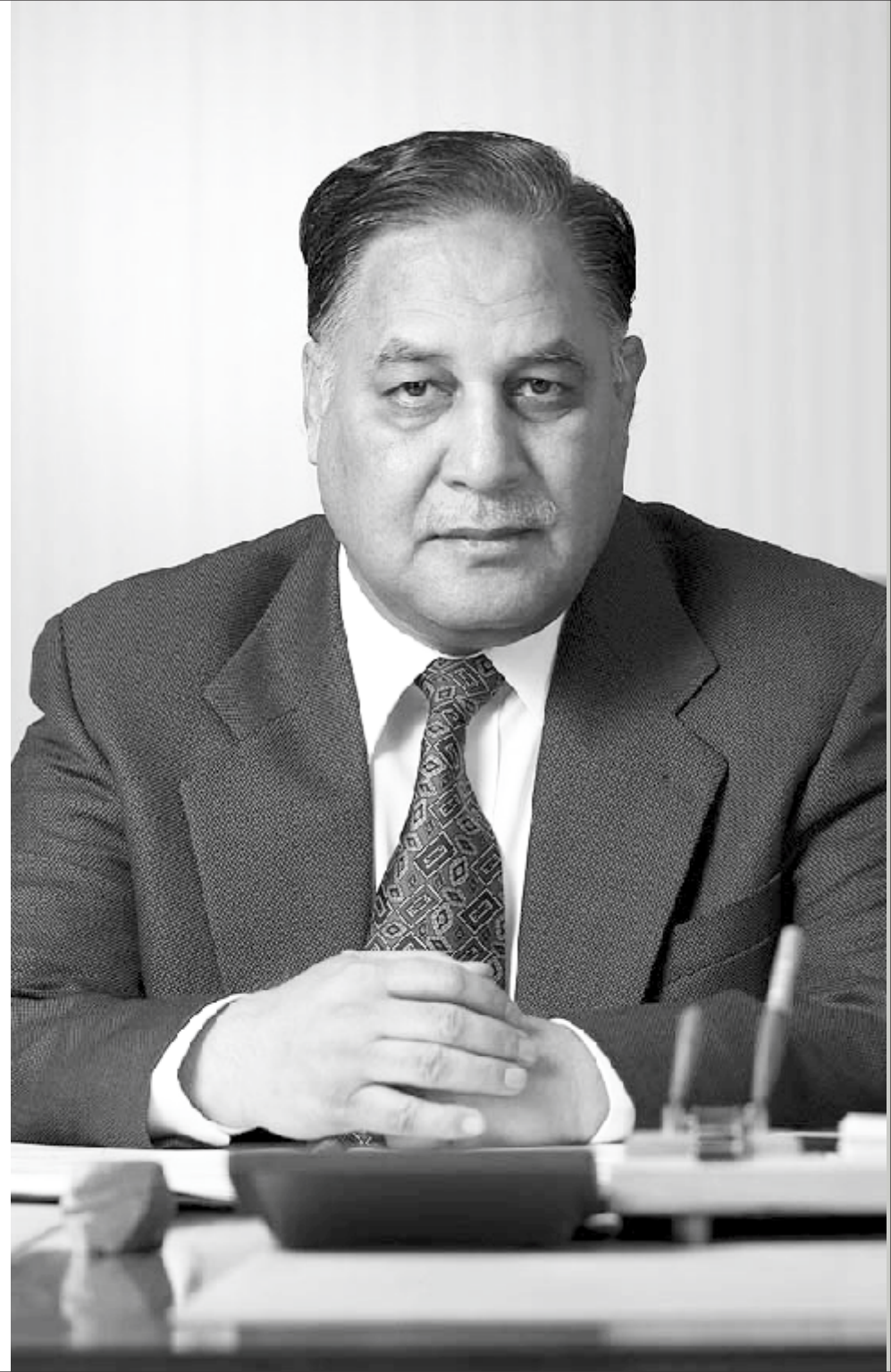
Contents

Foreword	06
Introduction	09
■ Who we are	10
■ What we do	11
Year at a Glance	12
Our Partners & Donors	13
Contribution to SDGs	14
Programs Introduction	16
Our Projects	18
■ Support Vitamin A Supplementation Program in Pakistan	18
■ Support NI in Planning and Implementation of Specific Activities under NI's Maternal, New-born and IYCN Project in Punjab, Khyber Pakhtunkhwa and Sindh provinces in Pakistan	20
■ Maternal, Newborn and IYCN services provision in LHW uncovered area of District Lodhran	22
■ Support NI in Implementation of Maternal and Newborn Nutrition Program	26
■ Accelerated Action Plan (AAP) for Reduction of Stunting and Malnutrition in Sindh	28
■ Saaf Suthro Sindh Program- District Sanghar	30
■ Saaf Suthro Sindh Program- District Sujawal	31
■ Saaf Suthro Sindh Program-Project Completion Report District Badin	32
■ Targeted Supplementary Feeding Programme-TSFP	34
■ Nutrition Stabilization Centre (NSC) Umerkot and Tharparkar	36
■ Program for Improved Nutrition in Sindh (PINS)	37
■ Integrated WASH, Nutrition & Health response for drought affected population	38
Center of Philanthropy and Community Services (COPCS)	40
■ Ramadan Campaign	41
■ Feed the Poor	41
■ Grassroots Level Support	42
■ Sip of Life	42
■ No Touch Methods	42
■ Pink Lady Campaign	43
■ Qurbani Campaign	43
■ In-Kind Support	43
■ Global-Outreach	44
■ Community Out-reach	44
The Hub School	40
Center of Professional Excellence (SCOPE)	46
Future Plans	49
Financial Report	50

Our Founder

“My vision is to fulfill our corporate social responsibilities, putting our share to improve community health services through efficient and effective network of our social arm – Shifa Foundation.”

Dr. Zaheer Ahmed
(1948-2011)



Foreword

Assalamu Alaykum!

I am proud to share the achievements of Shifa Foundation in the shape of Annual Report for the year 2019-2020. This report outlines the yearly progress of Shifa Foundation in the sectors of Health, Nutrition and Water, Sanitation and Hygiene along with emergency response in drought and flood affected areas of Pakistan. Our work reflects that we can make a difference even in these challenging times and that by developing synergies, can influence for change to reshape the lives of underprivileged and poverty-stricken communities.

Shifa Foundation commitment to its vision and mission is demonstrated by the fact that resources have been mobilized and the services have been expanded geographically to maximize the outreach and broaden the scope of work. It has developed recognition and reputation among communities, government and donors because of quality of work and timely service delivery.

In addition to other emergencies response, Shifa Foundation has also played a significant role during the COVID-19 pandemic by aligning its field interventions with WHO standards regarding COVID-19 to raise mass awareness and provide Personal Protection Equipment (PPEs) to government departments to enhance their capacities.

Besides Preventive Healthcare, Nutrition, WASH and DRR, Shifa Foundation also emphasizes on institutional capacity building to strengthen the government departments, particularly Department of Health in terms of trainings of health professionals and frontline workers.

Looking forward in the next year, we are quite optimistic to extend our services to further vulnerable communities of the country and contribute in strengthening their coping mechanism to respond emergencies.

I wish the Shifa Family success for their future endeavors. I am grateful to Allah Almighty that Shifa Foundation has become one of the most recognized and respected not-for-profit organizations in Pakistan.

Sincerely



DR. MANZOOR H. QAZI





Board of Governors



Dr. Manzoor ul Haq Qazi
Chairman



Dr. Habib ur Rehman
Member



Dr. Nasir Khokhar
Member



Dr. Khawaja S. Ahmad
Member



Mr. Samiullah Sharif
Member



Mr. Muhammad Zahid
Member



Dr. Zeeshan Bin Ishtiaque
Member



Mr. Irshad Bhatti
Member



Mr. Taimoor Shah
Member



Dr. Amir Jaffar
Member



Dr. Muhammad Ashraf
Member



Dr. Imran Nazir
Member



Dr. Jahanzeb Malik
Member

Executive Committee



Dr. Zeeshan Bin Ishtiaque
Chairman



Mr. Taimoor Shah
Member



Dr. Muhammad Ashraf
Member



Dr. Imran Nazir
Member



Dr. Darakhshan Jabeen
Member



Mr. Malik M. Uzair
Member



Dr. Junaid Mustafa
Member

Audit Committee



Mr. Mohammad Zahid
Chairman



Mr. Taimoor Shah
Member



Mr. Usman Ali
Member

Introduction



OUR VISION

To become the role model in the world of charity services by offering highly transparent, efficient, and valuable modes of support financially, in kind, and other services to the underprivileged members in the society without any discrimination, and while preserving their human dignity and self-respect.



OUR MISSION

To shape the future of the underprivileged communities by promoting health and development.

Urgent Response Services

Provide medical care, food, water, shelter, clothing, child-family reunification, and other critical/basic human needs related services to those individuals who cannot afford or access them otherwise.

Community Support Services

Empowering deprived, vulnerable and marginalized low-income individuals and communities through various community-based interventions including:

- Supporting affordable and accessible skills development education systems and programs for children and the youth.
- Supporting the development of safe drinking water supply schemes.
- Supporting the development of sanitation and sewerage systems.

- Supporting Livelihood Programs for lowest income individuals particularly women or children heading households, widows, and orphans.

Continuous Professional Development

- Enhancing teaching and training that will inform and underpin intellectual innovation and change.
- Promote advancement in educational and research mandate.
- Foster and develop leadership capacity through its education and research programs.
- Engage in knowledge through networking and use of emerging technologies.



CORE VALUES

A commitment to innovation, quality, integrity, equity, accountability and acting in an environment friendly manner.



PROGRAM OBJECTIVES

1. Improvement in health & nutrition
2. Improvement in water sanitation & hygiene status of communities.
3. Efficient use of local resources to reduce dependency on external support
4. Combat climate change and its drastic effects.
5. Collective efforts relief & emergency and promoting sustainable livelihood strategies.
6. Poverty reduction through community driven approaches.



WHO WE ARE

Shifa Foundation endeavors to create an enabling environment for deprived children, women, families and underprivileged communities to realize their fundamental rights to health, nutrition, education, livelihood and protection with dignity.



In early 1990s, a group of medical consultants with philanthropic and development professionals laid the founding stone of Shifa Foundation which was later on formally registered as Non-Governmental and Non-Profit national organization in 1991 under the Societies Act of 1860 bearing registration no. RS/ICT/142. Shifa Foundation is accredited and certified by Pakistan Centre for Philanthropy (PCP) and Economic Affairs Division (EAD) and the services are valued by partners and funding agencies. Our countrywide outreach is witness to our transparency and quality of work.

Shifa Foundation aims to serve the underprivileged communities and unserved people based on the principles of mutual respect, devoid of all kinds of discrimination on the basis of caste, religion, gender or any other social or political identities.

During the past 29 years SF has assisted more than 9 million beneficiaries in different thematic and geographical areas of Pakistan. Due to transparency of work, compliance to accountability and demonstrated capacity in project implementation. Shifa Foundation has strong community acceptance and donors trust to extend their partnership for implementing different projects.



WHAT WE DO

Shifa Foundation aims to serve the underprivileged communities and unserved people based on the principles of mutual respect, devoid of all kinds of discrimination on the basis of caste, religion, gender or any other social or political identities. Shifa Foundation has strict internal control mechanism to ensure quality of work, timeliness and performance through Compliance and Internal Audit Department. The scope of this department includes evaluation and examination of the adequacy and effectiveness of Shifa Foundation's governance, risk management, and internal controls as well as the quality of performance in carrying out the assigned responsibilities to achieve the organization's stated goals and objectives. The oversight of projects implementation is done as per agreement with national and international donors. Compliance department also ensures that policies are formulated, followed and updated as and when required.

Shifa Foundation provides countrywide humanitarian and development services with

multi-disciplinary and multidimensional approaches to address the unmet needs of the communities. SF endeavors to create an enabling environment for underprivileged children, women, families and communities to realize their fundamental rights to health, nutrition, education, livelihood, and citizenship with dignity. Within this spectrum, it works in different thematic areas including MNCH, Nutrition, Health, Child Protection & GBV, Food Security & Livelihood (FSL), Disaster Risk Reduction (DRR), Water, Sanitation & Hygiene (WASH) to assist and improve the living standards of communities.

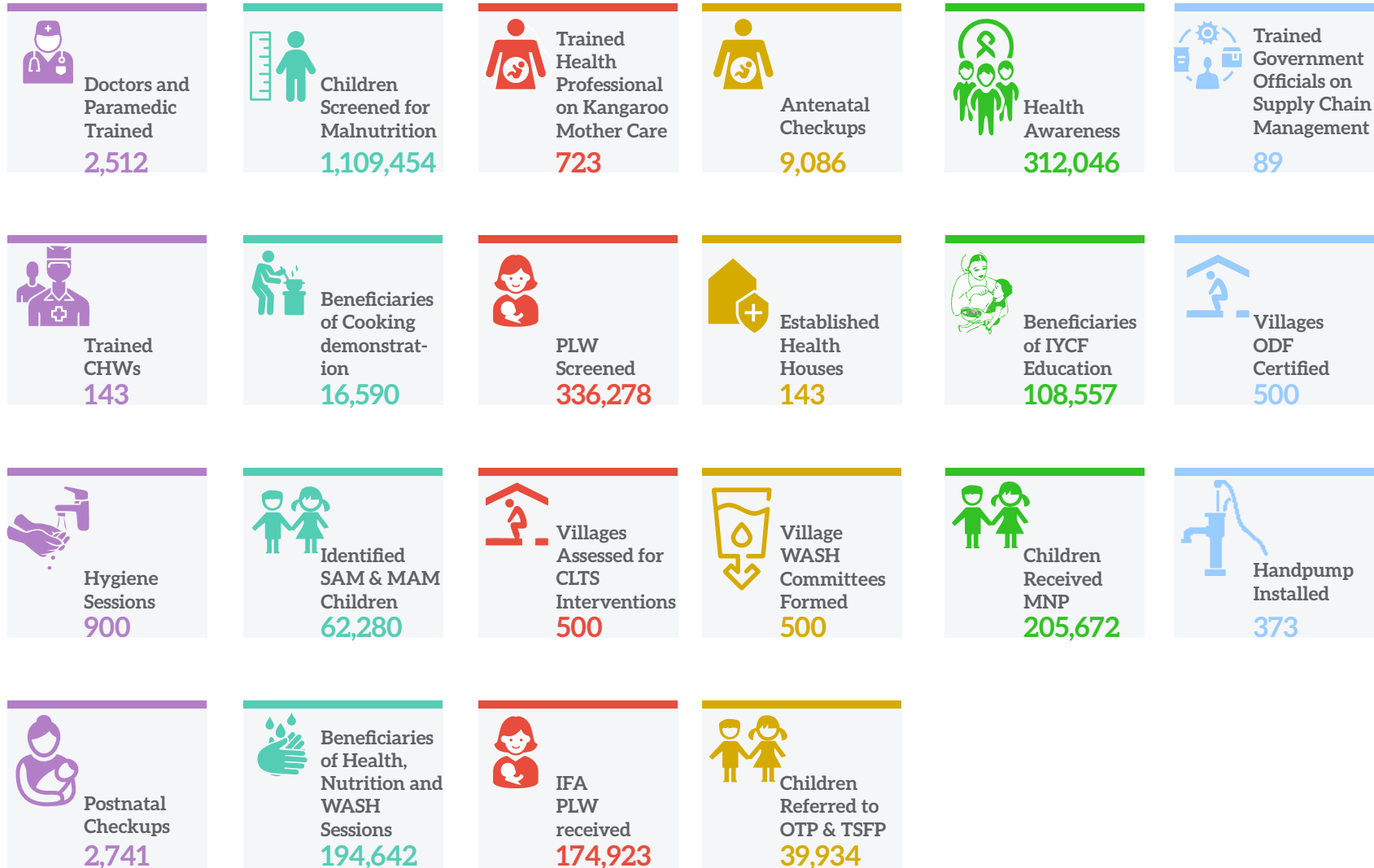
During the past 29 years SF has assisted more than 9 million beneficiaries in different thematic and geographical areas of Pakistan. Due to transparency of work, compliance to accountability, and demonstrated capacity in project implementation. Shifa Foundation has strong community acceptance and donors trust to extend their partnership for implantation different projects.

SF remained in partnership with World Bank, WHO, UNOCHA, UNICEF, WFP, UNDP, Concern Worldwide, Accelerated Action Plan (AAP), Nutrition International, Care International, Nutrition Sindh Program, Health Care Commission Khyber Pakhtunkhwa and Asian Development Bank and implemented different projects successfully. Our community support services aim empowering deprived, vulnerable and marginalized low-income individuals and communities through various community-based interventions including;

- Supporting affordable and accessible skills development education systems and programs for children and youth.
- Supporting the development of safe drinking water supply schemes.
- Supporting the development of sanitation and sewerage systems.
- Supporting livelihood support programs for the lowest income individuals particularly women or children headed households, widows and orphans.

YEAR AT A GLANCE

2019-2020



Shifa Foundation honors the contribution of its partners and their commitment alleviate poverty, overcome malnutrition and health issues, improve quality of education and literacy rate, provide clean drinking water and improved sanitation, strengthen the coping mechanism of the communities and create an enabling environment for all.



OUR PARTNERS & DONORS

Shifa Foundation expresses its deepest gratitude to the Government of Pakistan and its partners/donors for their moral, financial, technical and in-kind support and facilitation to help the underprivileged communities and address their unmet needs with honor and dignity.

Shifa Foundation honors the contribution of its partners and their commitment to the noble

cause of alleviating poverty, overcome malnutrition and health issues, improve quality of education and literacy rate, provide clean drinking water and improved sanitation, strengthen the coping mechanism of the communities and create an enabling environment for all. Partners support has repeatedly played a key role in our success to

extend our services and facilitation in terms of thematic and geographical expansion.

There is no way to fully express our gratitude for partners support, however Shifa Foundation is continually inspired by the dedication and generosity of its partners and donors for supporting and strengthening Shifa Foundation to achieve its targets and combat social issues.





CONTRIBUTION TO SDGs

Shifa Foundation endeavors through implementing multiple projects to support Government in achieving its targets of Sustainable Development Goals. Efforts are made to extend outreach to those areas which are lagging behind in acquiring the basic services to meet the standards of life as per SDGs.

1. No Poverty

Eradicating poverty in all its forms remains one of the greatest challenges facing humanity. Government of Pakistan endeavors to create employment opportunities to bring economic stability in the country. Shifa Foundation through its multiple projects not only contributes in achieving the target goals but also created employment opportunities for the local population, enhanced their skills and enabled them to contribute in their family income.

2. Zero Hunger

In light of the COVID-19 pandemic's effects on the food and agricultural sector, prompt measures are needed to ensure that food supply chains are kept alive to mitigate the risk of large shocks that have a considerable impact on everybody, especially on the poor and the most vulnerable. However, in immediate response, Shifa Foundation contributes through its program "Feed the Poor" which aims to distribute monthly food packages among the donor identified destitute families including widows, elderly and orphans and child headed families.

3. Good Health and wellbeing

During the year, Shifa Foundation implemented multiple health and nutrition projects to create mass awareness regarding communicable diseases including COVID-19, enhanced the capacity of Health Department through different trainings and replicated the LHWs model in uncovered areas to improve the access of population to health services.

Shifa Foundation emphasizes on institutional capacity building of Government and addressing the unmet needs of the communities. Mainly the following SDGs have been addressing during the year 2019-20 to support government in achieving its goals.



4. Quality Education

Education enables upward socioeconomic mobility and is a key to escaping poverty. To impart high quality education to all on merit in a stimulating environment as part of a continuing development process which enables students to acquire capabilities to realize their inherent potential that equips them to excel as achievers to meet the challenges of tomorrow. Shifa Foundation through The Hub School initiative promotes quality education and provides a learning environment to students for their brighter future. The Hub School is offering children an exciting, stimulating and rich curriculum, based on real reasons for learning.

5. Gender Equality

Ending all discrimination against women and girls is not only a basic human right, it is crucial for sustainable future.

Empowering women and girls help economic growth and development. During the reporting year, Shifa Foundation employed a large number of women in its projects, encouraged the educated females and empowered them through contributing in creating employment opportunities.

6. Clean Water and Sanitation

While substantial progress has been made in increasing access to clean drinking water and sanitation, billions of people—mostly in rural areas—still lack these basic services. In Pakistan only 34% people have access to safe drinking water and 19% defecate in the open. Worldwide, one in three people do not have access to safe drinking water, two out of five people do not have a basic hand-washing facility with soap and water. To increase access to clean drinking water, improved sanitation and ensure individual, domestic and environmental hygiene, Shifa Foundation contributed through its WASH projects particularly in the drought affected areas of Sindh province of Pakistan.



PROGRAMS INTRODUCTION

Shifa Foundation Program's sector aims to mobilize resources for supporting the vulnerable communities and ensure timely assistance through different projects.



Shifa Foundation Program sector is a multilateral donor funded initiative aiming to serve the vulnerable and underprivileged communities through need based and demand driven approaches. The ongoing and planned projects contribute to SDG 1- No Poverty, 2-Zero Hunger, 3- Good Health and Wellbeing, 4- Quality Education, 5- Gender Equality, 6- Clean Water & Sanitation and 13- Climate Change and

supporting government in achieving its SDGs mandate.

Principal emphasis would be on resource mobilization for future projects expansion and smooth implementation of the on-going projects. Efforts will be made to ensure quality of work, innovative solutions, cost optimization through multi-skilled workforce, teamwork, employee development, knowledge management,

accountability and transparency in the ongoing projects to satisfy the donors (funding agency), End user (Project beneficiaries), and SF-Management at organizational level.

We are committed to meet international standards of quality and accountability, making sure that communities have a voice. We measure our outcomes through Complaint Redressal Mechanism (CRM), Internal Monitoring



OUR PROJECTS

Support Vitamin A Supplementation Program in Pakistan

Shifa Foundation in partnership with Nutrition International (NI) supported Government and engaged with the Department of Health in terms of proving technical and operational support to improve and sustain the coverage of Vitamin A Supplementation Program.

Vitamin A deficiency is a public health problem of significance in Pakistan. The National Nutrition Survey (NNS), 2018 showed that 51.5% of children age 6-59 months were vitamin A deficient, of which 12.1% were severely deficient and 39.4% were mildly deficient. Nutrition International "NI" (formerly known as the Micronutrient Initiative) demonstrated intensified monitoring strategy for VAS in a pilot

project in 6 districts and then scaled it up to all the 24 districts identified with low coverage for vitamin A.

In response to the alarming situation as mentioned in NNS 2018, Shifa Foundation with the support of Nutrition International implemented Vitamin A Supplementation project to improve and sustain the coverage of

Vitamin A Supplementation Program. Shifa Foundation provided technical and operational support to the Government of Pakistan at national and provincial level to improve and sustain coverage of VAS program.

Through provision of admin and logistical support to Nutrition International Shifa Foundation successfully completed the

Supporting government and Department of Health to improve and sustain the coverage of Vitamin A Supplementation Program.



contracted tasks including;

- Training workshops for the provincial/district focal persons in each of the four provinces and two regions i.e. Sindh, Punjab, Khyber Pakhtunkhwa, Balochistan, Gilgit Baltistan and AJK.
- Support to the government for conducting vitamin A task force meeting in September 2019 and February/March 2020.
- Hiring of monitors in consultation with NI and EOC for monitoring in 19 low performing districts.

Shifa Foundation in partnership with Nutrition International (NI) supported to Government and engaged the Department of Health in terms of GOP support to improve and sustain the coverage of Vitamin A Supplementation Program.



Shifa Foundation in collaboration with Nutrition International has initiated Right Start Program activities to provide technical support to Government of Pakistan in the improvement of Maternal and New-born Health Care and Infant and Young Child Nutrition. The project was implemented in district Lodhran (Punjab), Jamshoro, Khairpur, Mirpurkhas (Sindh), Swabi, Nowshera and Mardan (Khyber Pakhtunkhwa) in close coordination and collaboration of respective districts and provincial governments.

The key approach was to ensure continuum of care by capitalizing on the first "1000 days" to reduce anaemia in pregnant women, avert complications during pregnancy, ensure safe delivery by a Skilled Birth Attendants and optimal care of the new-born at birth and adequate care of the mother after delivery.

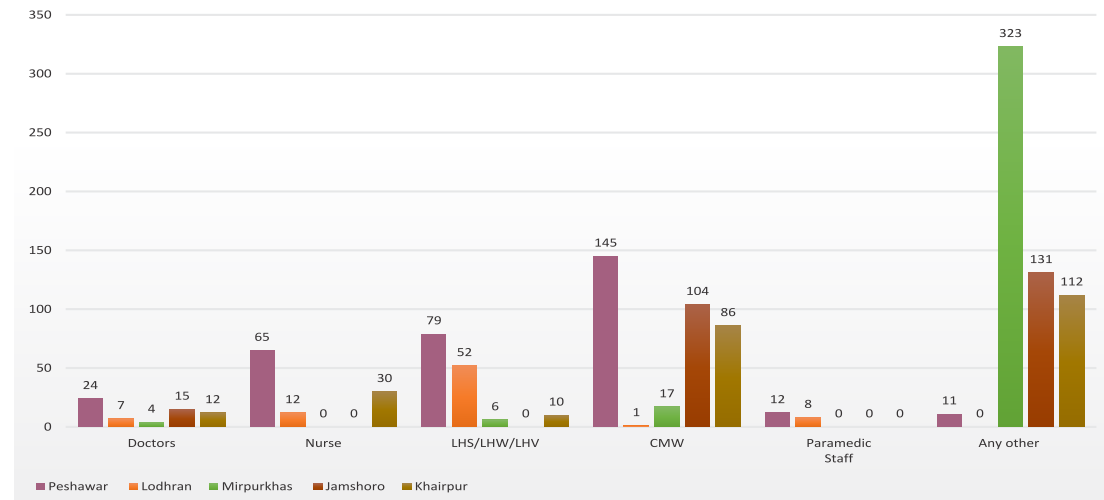
The main objective of the project was to support NI in continuing the implementation of specific activities under NI's RS project. Main activities of the project including thematic day's commemoration, strengthening of Kangaroo Mother Care (KMC) services, capacity building of Health Directorate, Khyber Pakhtunkhwa in Supply Chain Management, Exposure visit of Dept. Health Officials of Khyber Pakhtunkhwa to Punjab Health Department, organization of National Nutrition Conference, support in organizing Health Marathon, national dissemination event of Right Start, production of documentary on accomplishment of Right Start, Provincial Progress Review Meetings and strengthening coordination with the government departments at district, provincial and national level were carried out to achieve the intended objectives of the project.

The project trained 723 health care professionals including LHWs, LHVs, and CMWs on Kangaroo

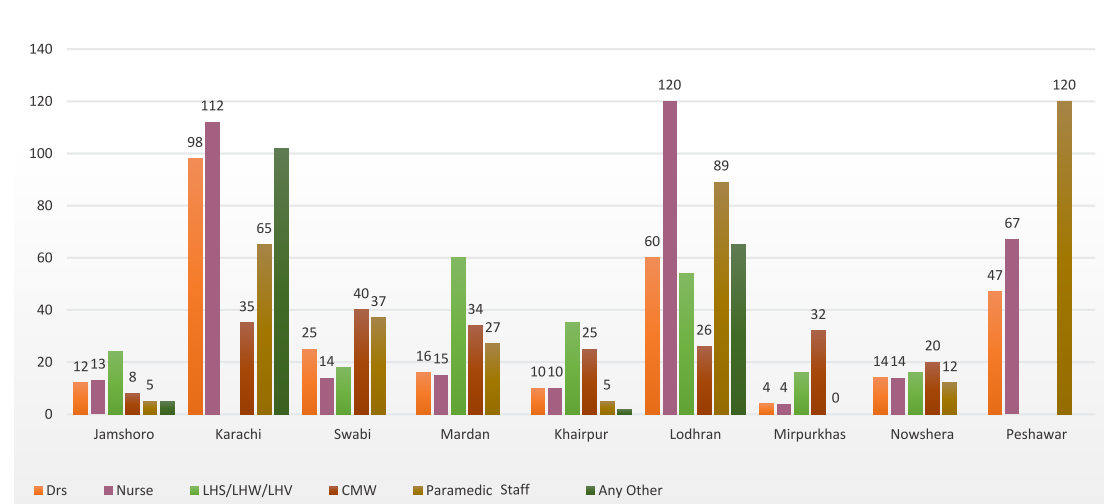
Mother Care in three districts named Swabi, Lodhran and Jamshoro. Training on Supply Chain Management (SCM) was held for 89

government officials from all districts of Khyber Pakhtunkhwa province.

INTERNATIONAL MIDWIFERY DAY CELEBRATION

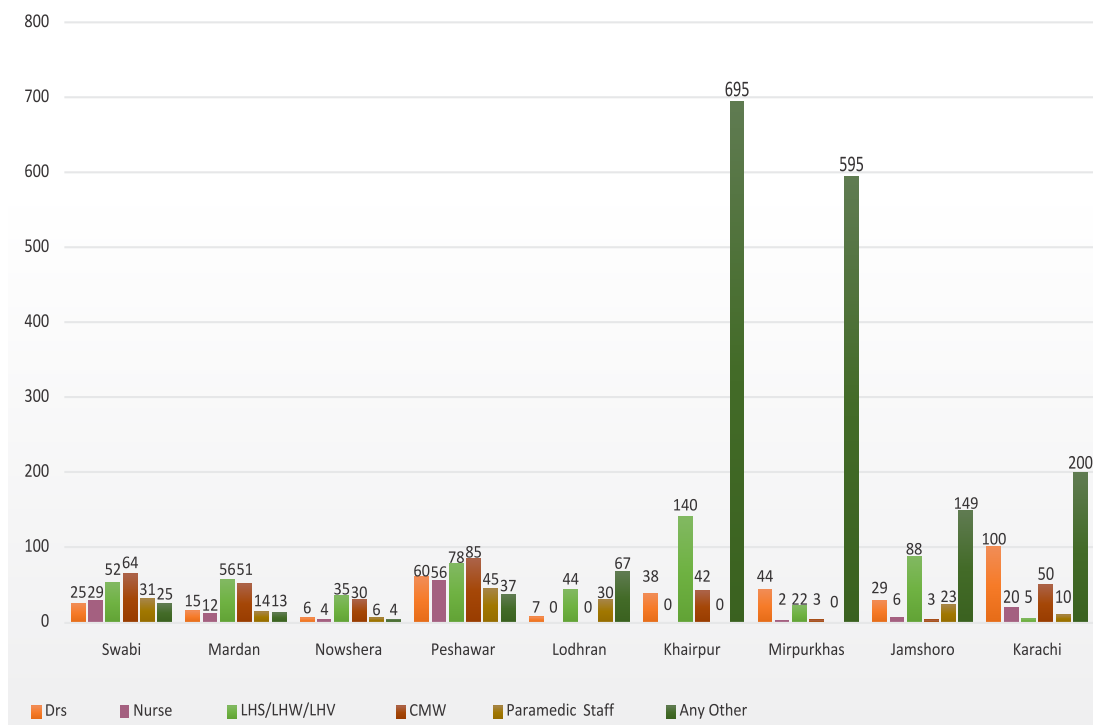


FIRST 1000 DAYS CELEBRATION IN RS PROGRAM AREAS





WORLD BREASTFEEDING DAY CELEBRATION



Different thematic days and events commemorated including International Midwifery Day (IMD Kangaroo Mother Care Day, World Breastfeeding Week (WBFW) using theme of “First 1000 Days of Life” in Punjab, Khyber Pakhtunkhwa and Sindh. Furthermore, awareness raising seminars, walks and sessions were also organized to supplement the events for awareness raising, sensitization and mobilization of the community and government departments.



Maternal, Newborn and IYCN services provision in LHW uncovered area of District Lodhran

This program aimed to provide support to the Provincial IRMNCH&NP Punjab in the improvement of maternal and child health & nutrition practices in uncovered areas of district Lodhran have been carried out to strengthen the Department of Health in provision of health services.

This project was an integrated approach of MNCH (Maternal, New-born and Child Health) with IYCN (Infant Young Child Nutrition) which aims to reach the communities, both in covered and uncovered areas, supporting the department of health in bridging the gap in 7 districts of Punjab, Sindh and Khyber Pakhtunkhwa.

Shifa Foundation with the funding support of

Nutrition International (NI) implemented the Right Start Program in district Lodhran uncovered areas where the Government National Program LHW was not providing health services. In that uncovered area, Shifa Foundation (SF) has trained and engaged Community Health Workers (CHWs) under the Right Start program as alternative to the Lady Health Workers to provide the same services.

In this context different interventions of this program aimed to provide support to the Provincial IRMNCH&NP Punjab in the improvement of maternal and child health & nutrition practices in uncovered areas of district Lodhran have been carried out to strengthen the Department of Health provision of health services. These interventions including; Formation of District Coordination Committee

143 CHWS reached around 52,776 households comprised of 312,046 people through establishment of 143 health houses in 24 UCs out of total 73 UCs in three Tehsils of Lodhran.

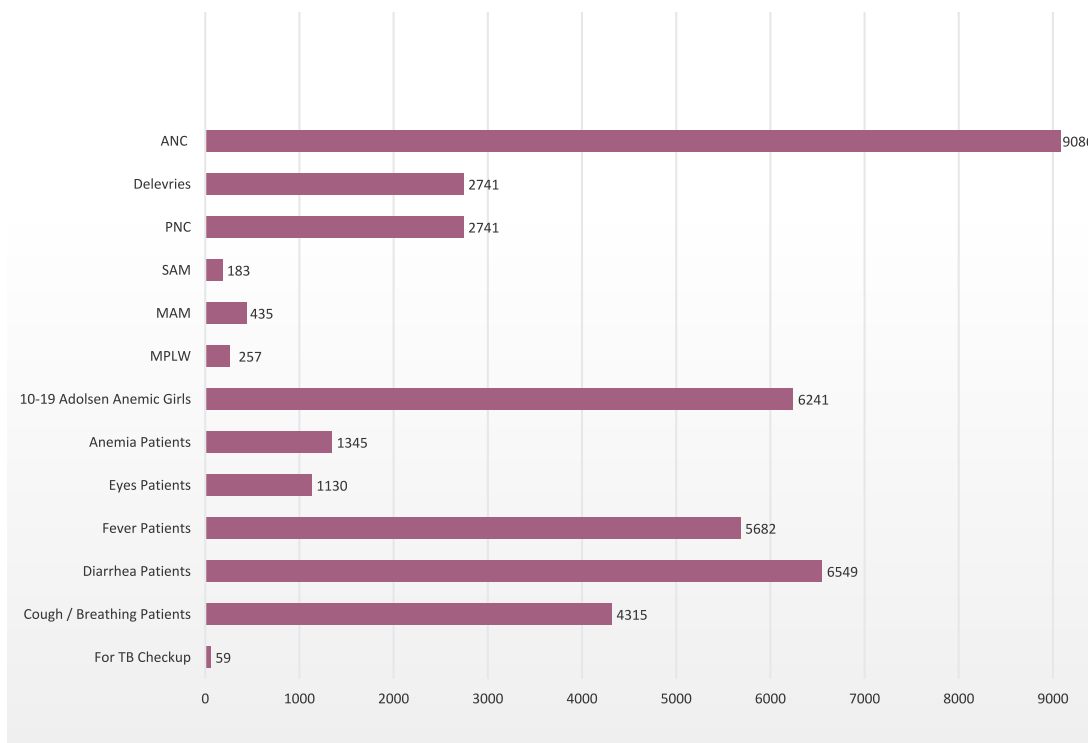
Supporting Provincial IRMNCH&NP Punjab in the improvement of maternal and child health & nutrition practices in uncovered areas of district Lodhran



for overseeing the project interventions, strengthening referral system of delivery cases, Formation of community Support Groups of men and women were included. Besides these support to Expanded Program on Immunization (EPI) department for routine vaccination, celebration of thematic days/weeks as world Breastfeeding Week, International Kangaroo Mother Care Day, Hand Washing Day, International Midwifery Day and Nutrition Week were also included in the project interventions.

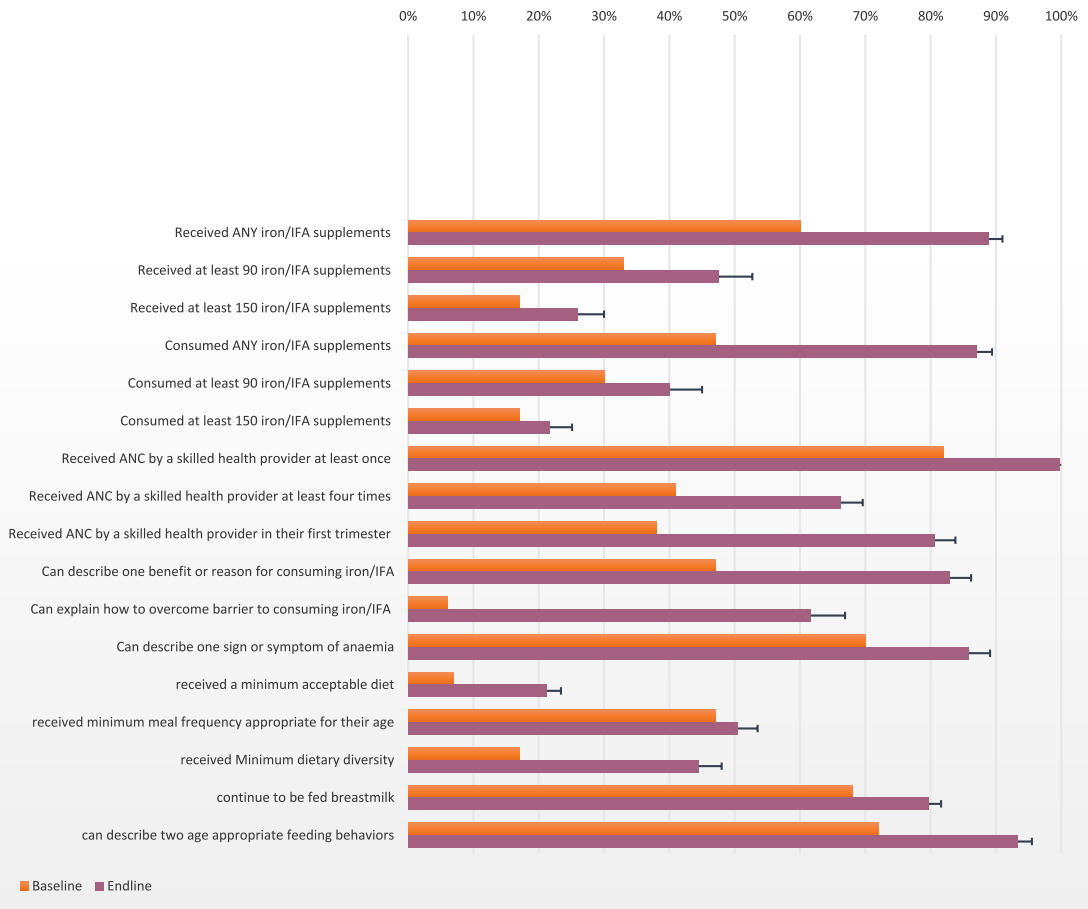
End line results of the project showed the improvement in four ANC visit as from 41% to 68%, improved the community knowledge in consuming the Iron Folic Acid (IFA), and improved the breastfeeding up to 20% and 15% in age appropriate meal frequency as compare to the baseline.

REFERRALS



The end line survey depicts the successes and achievement of project in un-covered area of district Lodhran. The end line survey also reported that the practice of receiving of IFA supplementation has been increased from 60% to 90% by population in target areas. Secondly a change was also observed in the consumption of IFA from 45% to 85%. While discussing about the improvement in four ANC visit, an increase was observed from 41% to 68%. A significant change was noted in the knowledge of communities about the methods to overcome barriers to consume the IFA. 20% improvement in knowledge and practices about breastfeeding and 15% about age appropriate meal frequency were recorded as compare to baseline data.

SELECTED RESULTS FROM THE NIMS BASELINE AND ENDLINE SURVEYS 2017 - 2020





“ Our children are our Nation's most valuable asset. They represent the bright future of our country and hold our hopes for a better Nation. Our children are also the most vulnerable members of society. Protecting our children against the fear of crime and from becoming victims of crime must be a national priority because leaving them vulnerable to exploitation is itself a crime.

To contribute a healthy nation, Shifa Foundation always focus on children health, nutrition and protection to play its role in their healthy growth.

”



Support NI in Implementation of Maternal and Newborn Nutrition Program

Management of Maternal New-born Health & Nutrition Program in districts Jamshoro, Khairpur, Swabi and Lodhran through strengthening coordination with Integrated Reproductive, Maternal, New-born, Child Health & Nutrition Program (IRMNCH& NP) Punjab, SLHWP and Integrated Health Program Khyber Pakhtunkhwa.



Shifa Foundation implemented this project to manage Maternal Newborn Health & Nutrition Program in districts Jamshoro, Khairpur, Swabi and Lodhran through strong coordination with government department such as Integrated Reproductive, Maternal, Newborn, Child Health & Nutrition Program (IRMNCH& NP) Punjab, Sindh Lady Health Worker (SLHWP) and Integrated Health Program Khyber Pakhtunkhwa district health authorities



In partnership with Nutrition International, Shifa Foundation implemented this project to manage Maternal Newborn Health & Nutrition Program in districts Jamshoro, Khairpur, Swabi and Lodhran through strong coordination with government departments such as Integrated Reproductive, Maternal, Newborn, Child Health & Nutrition Program (IRMNCH& NP) Punjab, Sindh Lady Health Worker Program (SLHWP) and Integrated Health Program Khyber Pakhtunkhwa & with support of district health authorities. Main activities of the project including;

- Thematic day's commemoration
- Strengthening of Kangaroo Mother Care (KMC) services,
- Capacity enhancement of representatives of health directorate, Khyber Pakhtunkhwa in Supply Chain Management
- Exposure visit of health officials of Khyber Pakhtunkhwa to Punjab Health Department
- Organization of National Nutrition Conference

- Support in organizing health marathon
- National dissemination event of Right Start
- Production of documentary on accomplishment of Right Start
- Provincial Progress Review Meetings and strengthening coordination with the government departments at district, provincial and national levels.

The project trained 723 health care professionals including LHWs, LHVs, and CMWs on Kangaroo Mother Care in three districts named Swabi, Lodhran and Jamshoro. Training on Supply Chain Management (SCM) training was held for 89 government officials from all districts of Khyber Pakhtunkhwa province.





Accelerated Action Plan (AAP) for Reduction of Stunting and Malnutrition in Sindh

Reducing stunting and malnutrition related morbidities and mortalities in under five children and improvement in nutritional status of Pregnant and Lactating Women (PLW).



Recruited Community Health Workers in LHWs uncovered areas and capacity enhancement of health care providers including Doctors, Lady Health Visitors, Nurses, Lady Health Supervisors (LHSs) and Lady Health Workers to address the malnutrition.



The Accelerated Action Plan (AAP) program aims to reduce stunting and malnutrition related morbidities and mortalities in under five children and improve nutritional status of Pregnant and Lactating Women (PLW).

The primary objective of the program was focused to reduce the rate of chronic malnutrition and therefore Infant Young Child Feeding (IYCF) is included to achieve the 1000 days' approach and have improved IYCF practices throughout the 1000 days from pregnancy till second birthday of new born baby. As observed under many researches that first 1000 days of the child life are important to save the child from stunting.

The target beneficiaries for this project were under five year children and Pregnant Lactating Women (PLW) in areas uncovered by LHWs in District Khairpur.

The proposed model promotes 1000 days plus approach and related best practices like early initiation of breast feeding, exclusive breast feeding, timely addition of complementary food and encouraging dietary diversity. These 1000

days included practices of antenatal and postnatal care, early initiation and exclusive breastfeeding, Improved practices of healthy complementary feeding to children from 6-23 months and supplementation of Pregnant and Lactate Women (PLW) and 6-23 months children (other than Severe Acute Malnourished-SAM).

To achieve the project objective, Shifa Foundation hired and trained Community Health Workers, formed Mother Support Groups (MSGs) and Father Support Groups (FSGs), carried out community awareness sessions, screened and referred under five years children for case identification of SAM children to the Outpatient Therapeutic Program. Besides these activities also enhanced the capacity of health care workers including Doctors, Lady Health Visitors, Nurses, Lady Health Supervisors (LHSs) and Lady Health Workers to achieve the objective of this project.

The primary objective of the program was focused to reduce the rate of chronic malnutrition and therefore Infant Young Child Feeding (IYCF) is included to achieve the 1000 days' approach and have improved IYCF practices throughout the 1000 days from pregnancy till second birthday of new born baby. As observed under many researches that first 1000 days of the child life are important to save the child from stunting.



Saaf Suthro Sindh Program- District Sanghar

Creating an Open Defecation Free (ODF) environment and Increasing public awareness about waterborne and water-related diseases, nutrition and hygiene.

Saaf Suthro Sindh program is the component of Multi Sectoral Action for nutrition. The Government of Sindh has embarked upon eradication of open defecation from the province by 2020. Under Inter Sectoral Nutrition Strategy of Sindh (INSS), the sanitation component of this project aligned with the Government of Sindh's sanitation intervention known as Saaf Suthro Sindh (SSS). It aims to increase the number of ODF villages in 13 districts through certification. The overall objective of this plan was to eradicate open defecation practices and improve access to

30 | Annual Report 2019-20

adequate hygiene practices mainly focused washing hands with soap. The specific objectives of this project were to promote knowledge, behaviour change, demand for services and opportunities for participation in rural communities, children, women and men to create Open Defecation Free (ODF) environment and increase public awareness about waterborne and water-related diseases, nutrition and hygiene. Shifa Foundation successfully certified 200 villages of the district as Open Defecation Free.



- ✦ Behaviour Change initiative to improve personal, domestic and environmental hygiene of the communities through integrated approach.
- ✦ Shifa Foundation successfully certified 150 villages of the district as Open Defecation Free and achieved the set target.



Saaf Suthro Sindh Program- District Sujawal

The major interventions under the SSSP were to achieve total sanitation not only through ensuring availability of latrines but more importantly, through changing health and hygiene behaviour of the people through Social Mobilization under the Community Led Total Sanitation (CLTS) approach. Shifa Foundation successfully certified 150 villages of the district as Open Defecation Free and achieved the set target.

Shifa Foundation implemented Saaf Suthro Sindh Program for the Open Defecation Free (ODF) certification in 400 villages of the district Sujawal. As per scope of the project, 400 villages were selected for working in district by following the criteria and get an endorsed list from district government. After the finalization of villages, the profiling of 280 was completed and triggering

activity was achieved in only in 150 villages due to restricted movement during COVID-19.

In these villages, cleanliness campaign and hygiene sessions were conducted to affect change in the community behaviour for personal, domestic and environmental hygiene. On the other hand, Ambassador of Change (AoC) also conducted their hygiene session at community level and Village WASH Committees monitored the construction activities.

Shifa Foundation implemented Saaf Suthro Sindh Program for the Open Defecation Free (ODF) certification in 400 villages of the district Sujawal. As per scope of the project, 400 villages were selected for working in district by following the criteria and get an endorsed list from district government. After the finalization of villages, the profiling of 280 was completed and triggering activity was achieved in only in 150 villages due to restricted movement during COVID-19.



Saaf Suthro Sindh Program-District Badin

The main objective of the SSSP was to achieve total sanitation not only through ensuring availability of latrines but most importantly changing health and hygiene behaviour of the people through social mobilization under the Community Led Total Sanitation (CLTS) approach

Shifa Foundation has implemented Saaf Suthro Sindh Program at district Badin - Sindh. Saaf Suthro Sindh program is the component of MSAN; The government has embarked upon eradication of open defecation from the province by 2020. The Government of Sindh's sanitation intervention known as Saaf Suthro Sindh (SSS) in the province aims to increase the number of ODF villages in 13 districts through certification.

The major intervention under the SSSP was to achieve total sanitation not only through

ensuring availability of latrines but most importantly changing health and hygiene behaviour of the people through Social Mobilization under the Community Led Total Sanitation (CLTS) approach. The proposed approach was a participatory facilitation by communities where members analyse their own sanitation status, including the extent of open defecation and the spread of faecal-oral contamination. Once people are convinced about the need for sanitation, communities construct

latrines on their own at the household level, according to their own capacity, and more importantly, use it regularly due to a strong sense of ownership. Furthermore, messages of health and hygiene were disseminated through engaging village committees, other community-based workers and social mobilizers.

Shifa Foundation successfully certified 150 villages of the district Open Defecation Free and achieved its target.

The Government of Sindh's sanitation intervention known as Saaf Suthro Sindh (SSS) in the province aims to increase the number of ODF villages in 13 districts through certification.



S No.	Activity	Target	Achievement	Variance	Remarks
1	Villages Assessment	200	200	0	Completed
2	AOC identified	150	150	0	Completed
3	VWC Formation	150	150	0	Completed
4	CLTC triggering	150	150	0	Completed
5	Hygiene Session	300	300	0	Completed
6	Village ODF Declaration & Certification	150	150	0	Completed
7	ODF Checklist by ODF Committee	150	150	0	Completed
8	Village Cleanning Campaign	150	150	0	Completed

The specific objectives of this project were to promote knowledge, behaviour change, demand for services and opportunities for participation in rural communities, children, women and men to create Open Defecation Free (ODF) environment and Increase public awareness about waterborne and water-related diseases,



Targeted Supplementary Feeding Programme-TSFP

Improvement in equitable access to and use of life saving nutritional services for vulnerable children (boys and girls) and pregnant and lactating women (PLW) at the community and health facilities level that meet national and internationally recommended minimum standards.



The project primary audience were children and women (PLW) while the district government, department of health and community gatekeepers/opinion leaders were the main stakeholders of the project.



Shifa Foundation with the funding support of World Food Program implemented TSFP project in district Tharparkar. The overall objective of the proposed project was to ensure and improve the equitable access to and use of life saving nutritional services for vulnerable children (boys and girls) and pregnant and lactating women (PLW) at the community and health facilities level that meet national and internationally recommended minimum standards of care for a population.

The project's primary audience were children and Pregnant and Lactating Women (PLW) while the district government, department of health and community gatekeepers/opinion leaders were the main stakeholders of the project. During the three months of interventions in Tharparkar awareness campaigns, IYCF, Nutrition and food, and health seeking attitude and behaviour were the major focused activities. IYCF counsellors, TSFP assistants, members of Mother Support Groups and Father Support Groups and the community health workers dedicated a portion of routine time during the field activities on the capacity building and behaviour change

communication in the community.

In the selected villages for the interventions, Mother Support Groups (MSGs) and Father Support Groups (FSGs) were formed. In the villages covered by Lady Health Workers (LHWs) the established bodies like support groups were sensitized about the interventions and project objectives. In the uncovered villages (villages covered by Community Health Workers CHWs) capacity building and on job training was planned for the CHWs. For each CHW covered villages 2 MSGs and 2 FSGs were formed and involved in order to achieve the goals of the interventions.

MSGs and FSGs were engaged for the community outreach activities, mass sensitization, nutrition mobilization, and early case detections and timely follow -ups. LHWs and CHWs were assigned to screen their respective areas and support the mobile teams during their field visits. CHWs played a phenomenal role in the IYCF counselling activities and early case detections.

IYCF counsellors, TSFP assistants, members of Mother Support Groups and Father Support Groups. The Community Health Workers dedicated a portion of routine time during the field activities on the capacity building and behaviour change communication in the community.

In the villages covered by Lady Health Workers (LHWs) the established bodies like support groups were briefed on the about the interventions and project objectives.



Nutrition Stabilization Centre (NSC) Umerkot and Tharparkar

Screening of children, referral of identified malnourished children to the OTP sites and providing Micronutrient Supplementation to children from 6 to 23 months of age and PLW.

In district Umerkot and Tharparkar, Shifa Foundation in association with Nutrition Support Program has established a Nutrition Stabilization Center in District Head Quarter Hospital, Umerkot, one in District Head Quarter-Mithi and one in Tehsil Head Quarter Hospital Chachoro, district Tharparkar. The project was funded by World Health Organization. Previously Shifa Foundation has been serving the communities voluntarily in case of SAM children with medical complications referred by

the LHWs and mobile teams of Shifa Foundation from all the declared drought hit villages. Through the NSC Shifa Foundation supported;

- SAM cases with medical complications with no appetite and/or Oedema are being referred to Stabilization Centre (In patient Care)
- The facility is 24/7, children, meeting criteria are being treated there till cure.
- No appetite children are being provided milk (F-75-F100) through NG tube and are kept on high focus regarding complications.
- At the Nutrition Stabilization Center well trained staff under the supervision of medical doctor having specialization in PAEDS and nutrition was providing services.

Establishment of Nutrition Stabilization Centre to strengthen the referral mechanism for severe acute malnutrition children having very low weight-for-height/weight-for-length, or clinical signs of bilateral pitting oedema contributed to reducing malnutrition in the target area

The focused objective of the project was to reach out rural communities in LHW uncovered areas of the district. Community Health Workers were hired and trained for outreach activities in areas where there were no LHWs. Main tasks of the field teams were; screening of children, referral of identified malnourished children to the OTP sites established by PPHI and also providing Micronutrient Supplementation to children 6 to 23 months of age and PLW.



Program for Improved Nutrition in Sindh (PINS)

Shifa Foundation has implemented “Programme for Improved Nutrition in Sindh (PINS) in district Mitiari in partnership with Concern Worldwide and in collaboration with Department of Health and District Administration. Shifa Foundation implemented outreach activities in the LHW uncovered areas of the district through Community Health Workers (CHWs) with the assistance of district and provincial teams. The project was executed in LHW uncovered areas in 30 Union Councils of District Mitiari.

The focused objective of the project was to reach out rural communities in LHW uncovered areas of the district. Community Health Workers were hired and trained for outreach activities in areas where there were no LHWs. Main tasks of the

field teams were; screening of children, referral of identified malnourished children to the OTP sites established by PPHI and also providing Micronutrient Supplementation to children 6 to 23 months of age and PLW. Besides this, CHWs also focused on preventive measures as part of a wider Social Behaviour Change Communication (SBCC) Strategy.

Shifa Foundation implemented outreach activities in the LHW uncovered areas of the district through Community Health Workers (CHWs) with the assistance of district and provincial teams. The project was executed in LHW uncovered areas in 30 Union Councils of District Mitiari.

Establishment of Nutrition Stabilization Centre to strengthen the referral mechanism for severe acute malnutrition children having very low weight-for-height/weight-for-length, or clinical signs of bilateral pitting oedema.



Integrated WASH, Nutrition & Health response for drought affected population

Shifa Foundation implemented this project with the funding support of UNICEF to address the WASH, Nutrition and Health needs of the communities at Umerkot, Sindh.

The basic purpose of thematic integration was to address all interlinking issues of the population and provide a 3 in 1 package to the communities. During the project tenure the following WASH, Nutrition and Health targets were achieved;

WASH

- 68,061 People (Particularly mothers, but also fathers) with increased knowledge, attitude and practices improved hygiene behaviours
- and healthy environment.
- 120 Villages assessed for project implementation at District Umerkot
- 76 CRPs identified, trained and deployed for five months with equal number of women and men
- 61 Village WASH committees formed and strengthened for operation, maintenance and sustainability of WASH facilities in community, with 35% of female committee members
- 10 Hygiene Promotion sessions at Union Council level and in institutes (Schools/Health facilities) and celebration of Global Handwashing Day
- 9775 families benefited with WASH NFIs especially targeting female headed households
- 96 MHM to adolescent girls and women at village level
- 183 Hygiene Promotion sessions conducted at community level, including participation of at least 50% females

Shifa Foundation adopted integrated approach to address the WASH, Nutrition and Health needs of the communities.

The basic purpose of thematic integration was to address all interlinking issues of the population and provide a 3 in 1 package to the communities.



- 102 hygiene promotion sessions in 15 girls' schools in the area, unless they are combined ones.
- 70 School WASH clubs formed with equal participation of girls.
- 05 Trainings on operation and maintenance of water supply schemes for village WASH committees
- 2 Trainings on capacity building for local masons and technicians
- 56 WASH Related messaging at Nutrition Centres.
- 56 Trainings of WASH Club

Nutrition

- 10 women and child friendly OTP (05 static and 05 mobile sites) established
- 10 breastfeeding corners established at nutrition sites
- 66,244 children 6-59 months old screened using MUAC & oedema assessment
- 35,727 PLWs screened using MUAC.
- 3,568 under five children enrolled in

- 105 Severally Acute Malnourished (SAM) children with complications referred to stabilization centre
- 90 Mother Support Groups (MSGs) formed
- 90 Father Support Groups (FSGs) formed
- 90 CNW (Community Nutrition Workers and LHWs) trained on behaviour change communication, facilitation skills and improved MIYCF practices
- 180 Mothers and Fathers Support Groups regularly engaged in BCC activities
- 400 cooking demonstrations community level by outreach workers
- 39156 mothers/ caregivers reached with key messages on MIYCF practice (through IPC & community sessions)
- 50 healthcare providers oriented on IYCF and CMAM
- 31412 of children 6-59 months received micronutrient supplement
- 25060 of PLW received micronutrient supplement
- 8449 children 24-59 months received deworming tablets

- 10 joint visits conducted with DHO office / Nutrition Focal Person / NSP.

Health

- 5 health facilities strengthened through provision of support for human resources and services
- 15,848 pregnant ladies provided antenatal care
- 1,389 pregnant ladies provided clean delivery kits
- 1,343 new-borns provided New-born Kits
- 1,812 institutional deliveries supported
- 1,812 mothers provided postnatal care
- 9,505 under 2-year children immunized under RI
- 18,663 under 5-year children benefited from IMNCI Services
- 35,626 beneficiaries reached through health education sessions



COPCS department is committed to generate funds from the people of Pakistan for the people of Pakistan so that financial assistance can be provided in case of emergencies and disasters. Additionally, these funds are also utilized to provide healthcare facilities for the deserving patients at Falahee Clinic within Shifa International Hospital. Furthermore, this department also providing support to the different projects of SF programs in terms of providing clean drinking water, food security, health and nutrition support in the Programs areas.

CENTER OF PHILANTHROPY AND COMMUNITY SERVICES (COPCS) UPLIFT THE COMMUNITIES

Shifa Foundation's "COPCS" function is designed to uplift the communities through community resource development and support. It involves fundraising from the communities and injecting those funds back with a focused approach to provide sustainable solutions and contribute in emergency responses.



COPCS strategizes to make communities resilient through developing Village Development Committees, identify and capacitate community volunteers for support during community interventions.

COPCS department is committed to generate funds from the people of Pakistan for the people of Pakistan so that financial assistance can be provided in case of emergencies, and disasters. In addition, these funds are also utilized to provide healthcare facilities for the deserving patients at

Falahee Clinic within Shifa International Hospital. Furthermore, this department is also providing support to the different projects of SF Programs in terms of providing clean drinking water, food security, health and nutrition support in the programs areas.



July 2019- June 2020 review of COPCS

"Ramadan Campaign"

The holy month of Ramadan is one of the most auspicious times of the year and a time when people are more philanthropic and tend to give maximum donations. Each Ramadan, Shifa Foundation's team works hard to raise much needed funds for the deserving community. Our intended recipients this year, were mostly daily wage earners, who were left vulnerable due to the government imposed lockdown to restrict the spread of COVID-19.

Fund collection proved difficult this year and Shifa Foundation initiated a campaign with the tagline "Lockdown Main Naiki ko Unlock Karo" to support the daily wage earners. Various celebrities campaigned with Shifa Foundation as Ambassadors for the campaign to encourage fundraising.



Feed the Poor

The Feed the Poor campaign aims to distribute monthly food packages among the donor identified vulnerable families headed by widows, elderly and orphans. Shifa Foundation's field team is tasked with carrying out a need assessment and based on the findings of their assessment the deserving families are supported in terms of dry Food Packages. These families are regularly supported, however they are also subject to yearly re-assessment to ascertain whether they require continued support.

During the reporting year food packages were distributed among 1502 families and 9012 direct beneficiaries were served. Each package weighing Approx. 50 kg and collectively almost 75 Tons food distributed.



Sip of Life

Shifa Foundation makes dedicated efforts to support communities in the provision of potable water and adopt innovative approaches to address their water needs. Shifa Foundation raises awareness to realize the importance of water and educate communities on water conservation, water storage and water management. Based on the dire needs of the communities Shifa Foundation installed 41 Hand Pumps in drought affected districts of Sindh.

Grassroots Level Support

Donations collection by placing the donation boxes at grassroots level is one of the core activities to support the vulnerable communities. The donation boxes are placed at various retail outlets, shops and inside Shifa International Hospital. The amount collected at grassroots level is used to treat the patients at Falahee Clinic. On daily basis, Shifa Foundation provides IPD, OPD, and diagnostic services to more than 300 patients free of cost or on reduced rates and partially affording patients.

Treatments of patients includes cataract, cancer patients, Shifa Liver care & sessions of autism patients.



No Touch Methods

It was a great challenge to plan such an extensive campaign during the pandemic. Shifa Foundation was able to quickly mobilize existing and new donors through various community outreach methods such as phone calls, emails, text messages and through social media platforms. The donations were made using no touch methods such as online money transfers, PayPal, credit and debit cards. The COPCS's efforts brought tremendous result and within two weeks donation tally reached at Rs. 12.88 million. By the second week of April, Shifa Foundation's achievement was also recognized as a headline in major national and metropolitan news-media organizations. 2000 food packages were distributed among deserving families with each package weighing approx. 32 kg and collectively almost 6.5 tons. These food packages were received from One-Ummah our charity partner for Ramadan food for daily wage earners. Food packages worth PKR 5.7 million were earmarked for Umerkot, Sindh and KPK, Puniab.

Daily Times





Pink Lady Campaign

From its inception in 1991, SF is dedicated to provide support to underprivileged communities with particular emphasis on health related issues. Due to the alarming situation of the increasing rate of breast cancer diagnosis, SF launched the Pink Lady Campaign. In this connection Shifa Foundation educated communities through different awareness campaigns in the reporting year 2019-20. Pakistan has a huge burden of breast cancer as 1 in 9 affected women dies whereas prevention costs no money. In this connection, in the month of October year 2019-20, Shifa Foundation launched "Pink Lady" campaign for representing every woman within our society across Pakistan fighting breast cancer at any stage of life. Early detection can save thousands of precious lives. The purpose of the campaign was to create awareness among the masses that breast cancer is a curable disease. The message raises awareness among the masses; telling them that breast cancer is a curable disease and they should talk about it. Awareness sessions were conducted during the campaign and community notables were involved to realize the importance of the campaign. The campaign was highlighted in different national newspapers and other media.



Qurbani Campaign

Prophet Muhammad (P.B.U.H) said that no act of charity would ever diminish your wealth. Shifa Foundation has been carrying out Qurbani projects from 2016 onward, around 78 animals were slaughtered during qurbani campaigns, benefitting over 6,000 people during Eid-ul-Adha 2019. Shifa Foundation helped in earning the highest rewards while complying with the government's instructions. Shifa Foundation did Qurbani of healthy animals and distributed the meat among the most deserving families in Pakistan. Total amount of Rs. 3,768,000 was collected for the qurbani campaign and thus 29 cows and 49 goats were slaughtered to support underprivileged communities.

The meat is distributed fresh, frozen or canned, depending on factors such as cost, availability and access. The animal is purchased from local suppliers in order to benefit the local economy. Each meat packet contains on average three kilograms of meat for a family of four or six members. Those who receive the Qurbani meat include widows, orphans, refugees and poor, elderly or disabled people. For the majority of these people, meat is not part of their regular diet and the Qurbani meat provides an opportunity to some families to eat meat after a whole year.



In-Kinds Support

Most of the funds raised throughout the year are mainly in form of cash, however at times we do receive goods as in-kind donations from few generous donors. In-kind donations play a supporting role in achieving our annual campaign targets. This year we saw a substantial growth and few of the in-kind donations are worthy of being highlighted as follows;

- 2000 dry food packages received from One-Ummah for Ramadan food for daily wage earner worth PKR 5.7 million.
- Masks gloves, sanitizers for protecting field teams from COVID-19 virus were received from corporate donors Bigo Live and Team Storm.
- Nafees Flour mills sent 25 flour packs 10 kg each in support of food for daily wage earners campaign.
- Under Pink Lady campaign we received Breast Light Devices (screening devices) from Breast Light UK having worth of PKR 200,000. Also juices disposable water bottles were received for the closing ceremony of the campaign by Prime Water, Shehzan, Primo Water.



MoU signed with:

- One-Ummah UK based charity
 - Human Development Foundation (HDF)
- Leading Local and International Charity Organization to strengthen implementation of community level projects.

Global-Out reach

The Global Outreach component aims to engage international donors, individuals, corporate and charity organizations at a global scale to raise much needed funds for various causes and campaigns run throughout the year. A dedicated team of professional call center agents make outbound calls/ emails and create awareness amongst our prolific international donor database in order to support the different thematic areas and collect donation using online platforms for noble causes.



Community Out-reach

Community outreach involves the offering of education, social planning, and support of activities to community residents freely and openly. As we arrange free medical camps for the public at different institutions accompanied by our doctors. The purpose is to reach the mass and to make them aware about what we are doing for the society. As a strong workforce for a not-for-profit organization; Shifa Foundation holds a huge responsibility on its shoulders to work in the respective communities to help the vulnerable societies. In this connection, Shifa Foundation arranged free medical camps with an aim that more people may benefit from its services.

Three free medical camps were arranged in Peshawar, Goi AJK, Mehr-Abadi Islamabad where 815 patients were screened successfully in order to get timely treatment at their doorsteps.





THE HUB SCHOOL

DOOR TO THE FUTURE

The Hub School (THS) is a quality educational institution that has been established by the Ahmed E. H. Jaffer Foundation and is managed by Shifa Foundation to provide quality education and learning environment to its students. The Hub School is unique from other schools because it offers a complete experience to the students enrolled. With a sprawling campus over more than 100 acres of land, the student is provided with every kind of outdoor activities that they are generally deprived of in urban lifestyle. Students have an option to reside on campus, where the daily routine includes academic learning, sporting activities, and other activities designed around the philosophy of the Hub School - to impart complete and wholesome learning for development.

Students also have an option to enroll as day-

students, where they will follow the exact routine as hostel students, except that the students go back to their homes after going through all the classroom, sporting and other co-curricular and extracurricular activities. The Hub school enables pupils to meet the challenges of an education that will prepare them for life in the 21st century. It uses a wide range of styles and resources to excite, motivate and challenge our



young people to succeed. There are many excellent resources, which include Interactive Whiteboard technology in every classroom, laptops for use in the classroom, a swimming pool, wild-life area, and a newly developed library with books to amuse, inspire and inform.

THS Philosophy

We at the Hub School do not equate academic knowledge through classroom instructions to education. Instead, we believe in holistic learning such that the student is be exposed to different educational experiences - all embedded into a wholesome curriculum. The curriculum that the school promotes resonates with its name - hub - that it is the hub of all the needs of the students: intellectual, spiritual and character building, kinesthetic and social needs.



SCOPE has often collaborated with external organizations for offering clinical trainings of staff and technicians from various healthcare institutes across the country.

CENTER OF PROFESSIONAL EXCELLENCE (SCOPE)

DESIGNED TO ADDRESS MANAGEMENT AND SKILL BUILDING

For the FY 2019-2020, SCOPE offered a diverse portfolio of open enrolment programs designed to address general management and skill building. SCOPE aims to deliver professional expertise and put professional development at the head of its strategy.

The Shifa Center of Professional Excellence (SCOPE) is the training entity operating within Shifa Foundation. Specializing in Healthcare and Management Trainings, SCOPE engages with clients in long-term partnerships delivering quality products under five thematic areas:

- Healthcare Quality
- Executive Education
- Management Development
- Skill Building Programs
- Clinical Trainings

For the FY 2019-2020, SCOPE offered a diverse portfolio of open enrolment programs designed to address general management and skill building. SCOPE aims to deliver professional expertise and put professional development at the head of its strategy.

Milestones Achieved by SCOPE:

During FY 2019-2020, SCOPE unveiled multiple products catering to a diverse field of professionals. Selected products offered at SCOPE are enumerated as below;

Turn Around Management:

The inaugural Turnaround Management program was conducted on 19-20 July 2019. It was aimed at professionals from C-Suite and organizational decision-making levels such as senior leadership and executive management teams. The program offered participants with a unique 360° holistic overview of their own organizations, by urging them to focus within their own organizations, products and services.



Particular emphasis was given to in-depth analysis and the exploration of causes for internal structural weaknesses leading to losses of productivity and resources such as financial seepages. In this training, participants learn the process of restructuring an entity to plug internal resource leakages to optimize and streamline operations for efficiency, enhancing productivity, which is reflective in their subsequent performance models. The inaugural session dubbed - **Restructuring Healthcare Industry by Turnaround Management Process**, offered insightful comprehension of numerous pitfalls faced by the fledgling healthcare industry. Global best practices were detailed in a

bid for participant organizations to self-assess and self-correct their existing structures. Participation was generated from healthcare professionals across the country, with representation from Islamabad, Faisalabad, Muzaffarabad, and Kunri, Sindh.

Quality & Hospital Management:

Launched in CY 2017, the Healthcare Quality & Hospital Management program is flagship training program offered at SCOPE. This six-day workshop is designed for professionals serving across the healthcare industry, with particular focus given to adopting the best practices and global standards of Quality Assurance and

patient safety protocols. Participants are imparted with skills such as Root Cause Analysis, Credentialing & Competency Assessment, Failure Mode and Effect Analysis, and Healthcare Leadership. This program also lays down the preparatory foundation for professionals interested in securing **Certified Professional in Healthcare Quality (CPHQ)** qualification. To date, approximately 100 participants in 05 six-day workshops have been trained. The latest session successfully delivered was during July - Aug 2019.



Shifa Life Support Training (LiST) Center:

During Fy 2018-19, SCOPE has undertaken to develop the Shifa Life Support Training (LiST) Center. This center is envisioned to serve as an in-house solution for the training needs of the affiliated institutions of Shifa International Hospitals Ltd. and the Shifa Colleges of Medicine and Nursing. The LiST Center strives to cater to the complete suite of Emergency Cardiovascular and Cardiopulmonary Resuscitation including Heartsavers, Basic Life Support – BLS, Advanced Cardiac Life Support – ACLS, and Pediatric Advanced Life Support – PALS trainings.

At the Shifa LiST Center, we are actively pursuing accreditation from the American Heart Association (AHA), and anticipate culmination of our application to form a licensed International Training Center (ITC) under the AHA Training Center Network. Under this vision, the LiST

Center will offer trainings to medical practitioners, paramedical staff, first responders, and emergency service professionals across the city. In its current form, the Shifa Life Support Training (LiST) Center developed its own curriculum and instruction manual for ACLS trainings. It is conducting ACLS certification courses for medical practitioners within Shifa International Hospitals recurrent on a fortnightly basis.

Status

- Inaugural session conducted on 15th June 2019. Approximately 373 medical professionals were certified for ACLS during in 21 sessions conducted during FY 2019 - 2020.
- General liability insurance was secured from EFU in March 2019
- Major training equipment was purchased during FY 2018-19.



Clinical Trainings:

SCOPE has often collaborated with external organizations for offering clinical trainings of staff and technicians from various healthcare institutes across the country. Notable amongst them being the Khyber Pakhtoonkhwa Healthcare Commission (KP HCC), Gilgit Baltistan Healthcare Commission (GB HCC), International Committee of the Red Cross (ICRC), Aga Khan Health Services (AKHS), and Lady Reading Hospital, Peshawar (LRH). During November 2019 – February 2020, SCOPE offered Nursing Leadership and Management sessions to a delegation of ICRC sponsored Nursing Staff and Technicians from LRH Peshawar. During the reporting period in January 2020, a training course for Bio-Engineering Services was also delivered to IRCR delegates from healthcare set-ups in Newly Merged Districts (NMD), Khyber Pakhtoonkhwa.





FUTURE PLAN

UPCOMING STRATEGIES

Shifa Foundation sustains continuous efforts to extend its outreach in terms of thematic and geographical expansion to assist maximum beneficiaries. In the upcoming year, institutional capacity building, supporting underprivileged communities and enhancing the coping mechanism of the communities for disasters and pandemic, are the focused activities as mentioned below;

- Increase in assistance in terms of thematic / geographical expansion
- Strengthening coordination with existing donors
- New opportunities - submission of proposals to different donors in multiple thematic areas.
- Ensure emergency response in flood, drought, COVID or other emergencies.
- Review of policies in terms of development and emergency response
- Need assessments in different areas as per situation response
- Continuance of quality education
- Renewal of PCP registration
- Continuing Medical Education, Training & Development, Life Support Trainings, Research & Ethics
- Increase in grassroots level fund-raising
- Increase in community level integration and brand recognition related activities
- Increase outreach to institutional donors through partnerships development.
- To maintain outreach through call center and increase number of donors
- Engagement of digital audience, converting into returning visitors and utilizing digital platforms into regular fund-raising tools.



FINANCIAL STATEMENTS

FOR THE YEAR ENDED JUNE 30, 2020

Independent Auditor's Report to the Trustees

Opinion

We have audited the financial statements of **Shifa Foundation** ("The Foundation"), which comprise the statement of financial position as at June 30, 2020 and the statement of income and expenditure, statement of comprehensive income, statement of changes in funds and reserves and cash flow statement for the year then ended, and notes to the financial statements, including a summary of significant accounting policies.

In our opinion, the accompanying financial statements present fairly, in all material respects, the financial position of Shifa Foundation ("the Foundation") as at June 30, 2020, and its financial performance and its cash flows for the year then ended in accordance with approved accounting and reporting standards as applicable to Pakistan.

Basis for opinion

We conducted our audit in accordance with International Standards on Auditing (ISAs) as applicable to Pakistan. Our responsibilities under those standards are further described in the *Auditor's Responsibilities for the Audit of the Financial Statements* section of our report. We are independent of The Foundation in accordance with the International Ethics Standards Board for Accountants' Code of Ethics for Professional Accountants as adopted by the Institute of Chartered Accountants of Pakistan (the Code), and we have fulfilled our other ethical responsibilities in accordance with the Code. We believe that the audit evidence we have obtained is sufficient and appropriate to provide a basis for our opinion.

Responsibilities of Management and Those Charged with Governance for the Financial Statements

The management is responsible for the preparation and fair presentation of the financial statements in accordance with the approved accounting and reporting standards as applicable in Pakistan and for such internal control as the management determine(s) is necessary to enable the preparation of financial statements that are free from material misstatement, whether due to fraud or error.

In preparing the financial statements, Management is responsible for assessing The Foundation's ability to continue as going concern, disclosing, as applicable, matters related to going concern and using the going concern basis of accounting unless the management either intends to liquidate The Foundation or to cease operations, or has no realistic alternative but to do so.

Those charged with governance are responsible for overseeing The Foundation's financial reporting process.

Auditor's Responsibilities for the Audit of the Financial Statement

Our objectives are to obtain reasonable assurance about whether the financial statements as a whole are free from material misstatement, whether due to fraud or error, and to issue an auditor's report that includes our opinion. Reasonable assurance is a high level of assurance, but is not a guarantee that an audit conducted in accordance with ISAs as applicable in Pakistan will always detect a material misstatement when it exists. Misstatements can arise from fraud or error and are considered material if, individually or in the aggregate, they could reasonably be expected to influence the economic decisions of users taken on the basis of these financial statements.



As part of an audit in accordance with ISAs as applicable in Pakistan, we exercise professional judgment and maintain professional skepticism throughout the audit. We also:

- Identify and assess the risks of the material misstatement of the financial statements, whether due to fraud or error, design and perform audit procedures responsive to those risks, and obtain audit evidence that is sufficient and appropriate to provide a basis for our opinion. The risk of not detecting a material misstatement resulting from fraud is higher than for one resulting from error, as fraud may involve collusion, forgery, intentional omissions, misrepresentations, or the override of internal control.
- Obtain an understanding of internal control relevant to the audit in order to design audit procedures that are appropriate in the circumstances, but not for the purpose of expressing an opinion on the effectiveness of The Foundation's internal control.
- Evaluate the appropriateness of accounting policies used and the reasonableness of accounting estimates and related disclosures made by management.
- Conclude on the appropriateness of management's use of the going concern basis of accounting and, based on the audit evidence obtained, whether a material uncertainty exists related to events or conditions that may cast significant doubt on The Foundation's ability to continue as a going concern. If we conclude that a material uncertainty exists, we are required to draw attention in our auditor's report to the related disclosures in the financial statements or, if such disclosures are inadequate, to modify our opinion. Our conclusions are based on the audit evidence obtained up to the date of our auditor's report. However, future events or conditions may cause The Foundation's to cease to continue as a going concern.
- Evaluate the overall presentation, structure and content of the financial statements, including the disclosures, and whether the financial statements represent the underlying transactions and events in a manner that achieves fair presentation.

We communicate with those charged with governance regarding, among other matters, the planned scope and timing of the audit and significant audit findings, including any significant deficiencies in internal control that we identify during our audit.



GRANT THORNTON ANJUM RAHMAN
Chartered Accountants

Engagement Partner: Hassan Riaz
Islamabad
June 18, 2021

SHIFA FOUNDATION
STATEMENT OF FINANCIAL POSITION
AS AT JUNE 30, 2020

	Note	2020 (Rupees)	2019
NON-CURRENT ASSETS			
Operating fixed assets	4	10,330,616	18,263,033
Long term investments	5	139,917,629	131,958,990
		150,248,245	150,222,023
CURRENT ASSETS			
Receivable from donors	6	19,474,604	60,434,676
Receivable from related party - subsidiary	7	17,893,636	-
Advances, deposits, prepayments and other receivables	8	17,685,201	42,913,813
Advance income tax (net of provision)	9	18,380,103	10,611,664
Cash and bank balances	10	13,254,711	23,714,865
		86,688,254	137,675,018
TOTAL ASSETS		236,936,500	287,897,041
FUNDS			
Unrestricted funds	11	(11,513,387)	14,166,306
Restricted funds	12	45,283,823	90,595,232
Revaluation reserve	13	113,933,163	106,191,693
		147,703,599	210,953,231
NON CURRENT LIABILITIES			
Liability against assets subject to finance lease		-	905,140
CURRENT LIABILITIES			
Creditors, accrued and other liabilities	14	88,357,071	75,731,722
Current maturity of liability against assets subject to finance lease	15	875,830	306,949
TOTAL LIABILITIES		89,232,901	76,038,671
TOTAL FUNDS AND LIABILITIES		236,936,500	287,897,041
CONTINGENCIES AND COMMITMENTS	16		

The annexed notes from 1 to 28 form an integral part of these financial statements.



Trustee



Trustee

SHIFA FOUNDATION
STATEMENT OF INCOME AND EXPENDITURE
FOR THE YEAR ENDED JUNE 30, 2020

	Note	2020			2019
		Unrestricted funds	Restricted funds	Total funds	Total funds
INCOME					
Grants and voluntary contributions	17 & 12.1	37,185,861	28,655,099	65,840,960	83,393,722
Grants from donors	12.1	-	240,115,136	240,115,136	146,420,515
Income from training, labs and media services	18	58,855,462	-	58,855,462	67,984,590
Other income	19	35,908,287	-	35,908,287	23,218,630
		131,949,610	268,770,235	400,719,845	321,017,457
EXPENDITURE					
Salaries, allowances and other benefits		67,578,701	133,630,241	201,208,942	139,316,941
Medical assistance		5,187,742	28,655,099	33,842,841	61,787,169
Rent		10,630,345	3,724,493	14,354,838	12,206,213
Printing and stationery		1,197,976	1,367,340	2,565,316	6,694,291
Supplies		1,372,786	3,889,257	5,262,043	7,857,678
Travelling and conveyance		4,505,729	33,461,166	37,966,895	23,762,535
Utilities & communication		8,474,007	2,059,233	10,533,240	9,714,722
Media/advertisement expenses		2,059,392	-	2,059,392	1,188,263
Auditor's remuneration		400,000	-	400,000	275,000
Training, workshops & consultancy charges		2,846,194	50,667,449	53,513,643	28,520,627
Legal charges		1,034,239	-	1,034,239	1,338,600
Repair and maintenance		4,366,556	-	4,366,556	1,255,132
Project expenses		1,745,957	9,589,678	11,335,635	8,727,752
Fee and subscription		1,864,804	-	1,864,804	27,910
Bank charges		438,467	-	438,467	324,757
Receivable written off		-	1,726,279	1,726,279	-
Provision for doubtful receivables	8	10,102,561	-	10,102,561	-
Depreciation	4	3,380,392	-	3,380,392	2,578,513
Donations	20	23,079,018	-	23,079,018	38,538,487
Miscellaneous		7,152,884	-	7,152,884	2,111,648
EXPENDITURE FOR THE YEAR		157,417,750	268,770,235	426,187,985	346,226,238
DEFICIT BEFORE TAXATION		(25,468,141)	-	(25,468,141)	(25,208,781)
Taxation	9	(211,552)	-	(211,552)	(3,037,025)
DEFICIT AFTER TAXATION		(25,679,693)	-	(25,679,693)	(28,245,806)

The annexed notes from 1 to 28 form an integral part of these financial statements.



Trustee



Trustee

SHIFA FOUNDATION
CASH FLOW STATEMENT
FOR THE YEAR ENDED JUNE 30, 2020

	2020	2019
	Rupees	
CASH FLOWS FROM OPERATING ACTIVITIES		
Deficit before taxation	(25,468,141)	(25,208,781)
Adjustments for:		
Depreciation of property, plant and equipment	3,380,392	2,578,513
Provision for doubtful receivables	10,102,561	-
Receivable written off	1,726,279	-
Gain on sale of shares	(181,848)	(4,653,603)
Dividend from NIT	(156,355)	-
Excess restricted funds recognized as income	(9,886,203)	-
Management fee income	(14,986,622)	(11,505,235)
Expenditure paid from restricted funds	(249,295,631)	(134,939,710)
Operating cash outflow before changes in working capital	(284,765,568)	(173,728,816)
Changes in working capital:		
(Increase)/decrease in current assets:		
Receivable from donors	39,233,793	(56,685,842)
Tax refund	-	29,022,740
Due from related party	(7,989,967)	-
Advances, deposits, prepayments and other receivables	15,126,051	(8,904,670)
Increase/(decrease) in current liabilities:		
Creditors, accrued and other liabilities	12,625,349	22,264,480
Cash generated from operations	58,995,226	(14,303,292)
Restricted funds received	228,857,047	164,087,757
Income tax paid	(7,979,991)	(3,747,543)
Net cash used in operating activities	(4,893,286)	(27,691,894)
CASH FLOWS FROM INVESTING ACTIVITIES		
Capital expenditure on operating fixed assets	(5,351,643)	(6,253,566)
Investment in SIHT	(100,000)	-
Cash proceeds from disposal of shares	221,034	5,224,024
Shares received as donation	-	(4,175,670)
Net cash used in investing activities	(5,230,609)	(5,205,212)
CASH FLOWS FROM FINANCING ACTIVITIES		
Lease payment	(336,259)	(302,461)
Net cash used in financing activities	(336,259)	(302,461)
Net decrease in cash and cash equivalents	(10,460,154)	(33,199,568)
Cash and cash equivalents at the beginning of the year	23,714,865	56,914,433
Cash and cash equivalents at the end of the year	13,254,711	23,714,865

The annexed notes from 1 to 28 form an integral part of these financial statements.



Trustee



Trustee



SHIFA
FOUNDATION
making an effort



TREE
PLANTING
DRIVE

IN COLLABORATION WITH
SHARE HAPPINESS SOCIETY



ATION

Save Nature
for Future

SOCIETY

 www.shifafoundation.org


 info@shifafoundation.org

 www.facebook.com/shifafoundation

 www.twitter.com/ShifaFoundation

 <https://www.youtube.com/c/shifafoundationpakistan>

 Plot # 210, Street # 7, I-9/2, Islamabad.

 +92 (51) 846 4171